



CLEMCO
The Performance
System

TECHNICAL DATA SHEET

Note: For safe, efficient blasting, read and follow the owner's manual and seek training for everyone who will use this equipment.

Purpose

The Apollo 60 HP meets ANSI standards for impact protection and OSHA standards for respiratory protection and noise limitations. The Apollo 60's full-helmet design protects the blast operator's head from rebounding abrasive and from construction-site impact hazards.

The heavy-duty cape protects the operator's neck, shoulders, and chest from rebounding abrasive.

Requirements for Operation

The following items are required or recommended for operation, but are not included with this respirator:

- Source of Grade D (or better quality) breathing-air providing 7 to 15 cfm at 65 to 100 psi (If CAT or CCT is used, increase cfm to 20)
- A breathing-air filter (such as the Clemco CPF) to remove oil, moisture, particles, and odors
- Carbon monoxide monitor and alarm (such as the Clemco CMS-2)
- $\frac{3}{8}$ -inch respirator hose from the breathing-air filter to the helmet connection
- Protective clothing, gloves, and shoes suitable for a heavy construction site
- Primary hearing and eye protection

Description of Operation

The Apollo 60 includes a double-shell construction helmet supported by an adjustable suspension. The operator adjusts the suspension to fit, then installs it in the helmet. A chin strap holds the helmet firmly in place.

The wide, full-view window provides an expansive field of view. An inner fixed lens seals out dust and abrasive. Up to five lightweight, disposable outer lenses, held in place by a hinged frame, protect the inner lens from pitting. As the outermost disposable lens becomes pitted, it can be torn off to expose the next lens.

Description

The Apollo 60 HP is a Type CE, continuous-flow, supplied-air respirator for abrasive blasting, to be used with compressed air source. The high visibility red helmet has a full-view window, and a waist-length protective cape.



The helmet can be purchased with one of the following:

- Constant-Flow Connector - fixed air flow (no adjustment possible)
- Air Control Valve - to adjust flow rate of incoming air
- Cool Air Tube - to cool incoming air
- Climate Control Tube - to cool or warm incoming air as needed

With all but the Constant-Flow Connector, the operator can adjust the flow of air. None of the valves can be adjusted beyond preset minimum and maximum settings specified by OSHA.

A flexible breathing tube between the valve and the helmet allows free movement of the operator's head. This tube contains specially-formulated sound-deadening materials that help the respirator comply with 80 dBA maximum noise level while allowing free air flow. While blasting, the operator must wear ear plugs or other suitable hearing protection and safety glasses or goggles.

The air enters the helmet at the rear, travels through a sound-attenuating distribution system at the top, and circulates

Apollo 60 HP Supplied-Air Respirators

Stock No.

10505, 10508, 10509, 10510,
10511, 10512, 10513, 10514,
10515, 20213, 20214, 21300

about the operator's head and face. The incoming air maintains positive pressure inside the helmet, so exhaled air exits via the knit collar. Maintaining positive pressure inside the helmet helps keep out potentially harmful dust and abrasive.

Advantages

- Wide, full-view window
- Lightweight construction
- Nylon carrying strap
- Allows operator to wear supplementary hearing and primary eye protection

Approvals and Certification

The Apollo 60 helmet is a NIOSH-approved, type CE respirator (approval number TC-19C-130) and is recognized by OSHA as having an assigned protection factor (APF) against lead dust of 1000 times the permissible exposure limit (PEL). It also meets the American National Standards Institute (ANSI) requirement for hard hat protection.

NOTE: Prior to use, ensure that the Apollo, type CE, supplied-air respirator is appropriate for your specific blasting conditions and requirements.

Related Clemco Literature

Description	Stock No.
Contractor Series Catalog	21385
Abrasive Blasting Safety Practices	22090
Blast Off 2	09294
Safety Equipment Product Study	07764
Apollo 60 HP Owner's Manual	10533

Options and Accessories

CPF-20 air filter (for one or two operators)	03578
CPF-80 air filter (for up to four operators)	03527
Carbon monoxide alarm, CMS-2	22894
Heavy cotton/leather blast suit	S (08920), M (08921), L (08922), XL (08923)
Seasonal cotton/nylon blast suit	M (22914), L (22915), XL (22916), XXL (22917)
Leather gloves	02243
Low pressure conversion kit. Converts HP helmet to LP helmet	22079

Respirator Systems and Accessories

NOTE: Respirators do not include alternate respirator hose.
Alternate respirator hose must be ordered separately.

Apollo 60 HP with CFC	21300
w/Air Control Valve	10505
w/Cool Air Tube	10508
w/Climate Control Tube	10509
Apollo 60 HP with CFC and hose	20213
w/Air Control Valve & hose	10510
w/Cool Air Tube & hose	10511
w/Climate Control Tube & hose	10512

Apollo 60 HP with CFC, hose and CPF-20	20214
w/Air Control Valve, hose and CPF-20	10513
w/Cool Air Tube, hose and CPF-20	10514
w/Climate Control Tube, hose and CPF-20	10515

Packaging Respirator Only

Stock No.	Dimensions	Weight
21300	13 1/2" x 13" x 11"	7.5 lb
10505	(same)	7.5 lb
10508	(same)	8.4 lb
10509	(same)	8.9 lb
20213	Respirator and hose	15.5 lb
10510	(same)	15.5 lb
10511	(same)	16.4 lb
10512	(same)	16.9 lb
20214	Respirator, hose and CPF	35.5 lb
10513	(same)	35.5 lb
10514	(same)	36.4 lb
10515	(same)	36.9 lb

Respirator Hose (in separate poly bag)

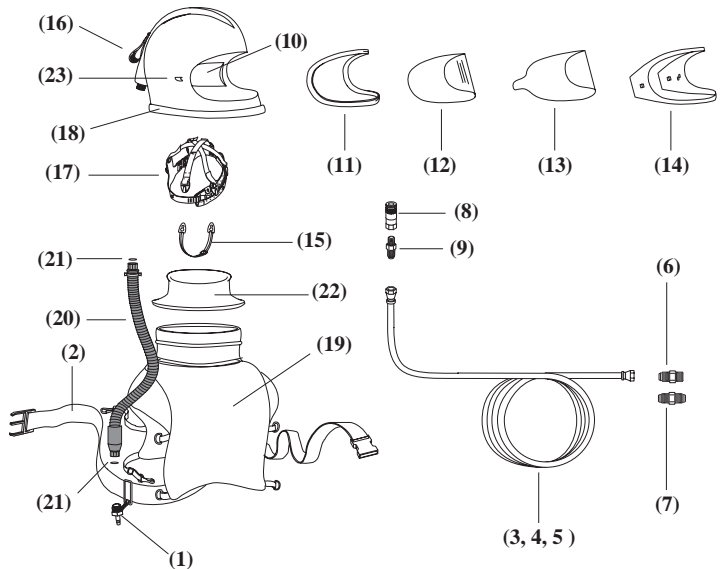
04397 (25 ft)	10" x 10" x 3"	2.8 lb
04415 (50 ft)	12" x 12" x 5"	5.8 lb
04398 (100 ft)	14" x 14" x 5"	11.6 lb

CPF (in separate box)

03578 (CPF-20)	21" x 12" x 9 1/2"	20 lb
03527 (CPF-80)	(same)	22 lb

Replacement Parts

Item	Description	Stock No.
1.	Constant-Flow Connector, without belt	21415
2.	Belt assembly, 2"	04430
3.	Respirator hose, 3/8" x 25' (includes 7 & 8)	04397
4.	Respirator hose, 3/8" x 50' (includes 7 & 8)	04415
5.	Respirator hose, 3/8" x 100' (includes 7 & 8)	04398
6.	Adaptor, 3/8" hose to 3/8" pipe	00022
7.	Union, 3/8" hose to 3/8" hose	01020
8.	Disconnect, 1/4" female	00025
9.	Adaptor, 3/8" hose to 1/4" pipe	01019
10.	Acoustical foam kit, sides	04369
11.	Gasket, window	04452
12.	Inner lens, .040" (5)	04367
13.	Outer lens, .0075", perforated (25)	04361
14.	Window frame kit	08741
15.	Chin strap	04460
16.	Handle strap	03623
17.	Suspension	10532
18.	Cape attachment strap	10534
19.	Cape, red, with black inner collar	04435
20.	Breathing tube assembly w/swivel ends	22811
21.	O-ring, 11/16" ID x 7/8" OD, 2 required	22815
22.	Inner collar kit	08740
23.	Window latch kit	04368



Authorized Distributor:



ISO 9001-2000 certified. Clemco is committed to continuous product improvement. Specifications are subject to change without notice.

© 2004 Clemco Industries Corp. • One Cable Car Drive • Washington, MO 63090 • Phone (636) 239-4300 • Fax (636) 239-0788

Stock No. 21961

www.clemcoindustries.com

Job No. 1195-1295 • Date of Issue: 06/98, Rev. B; 08/04